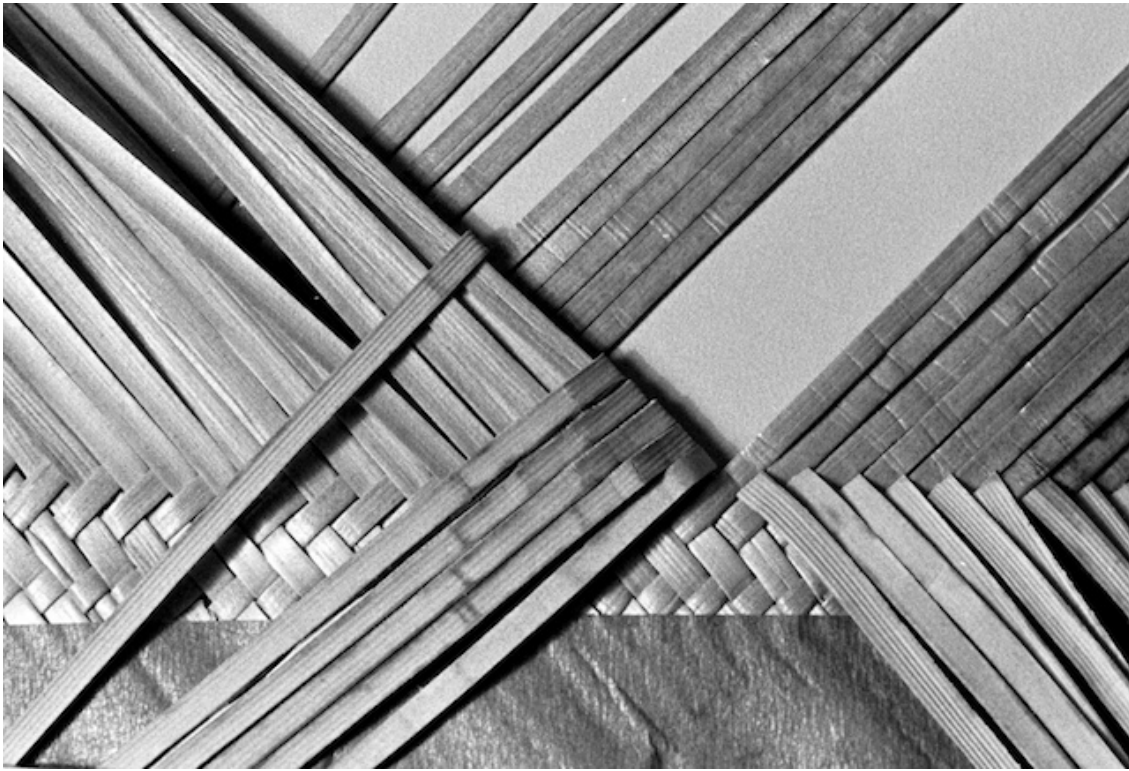
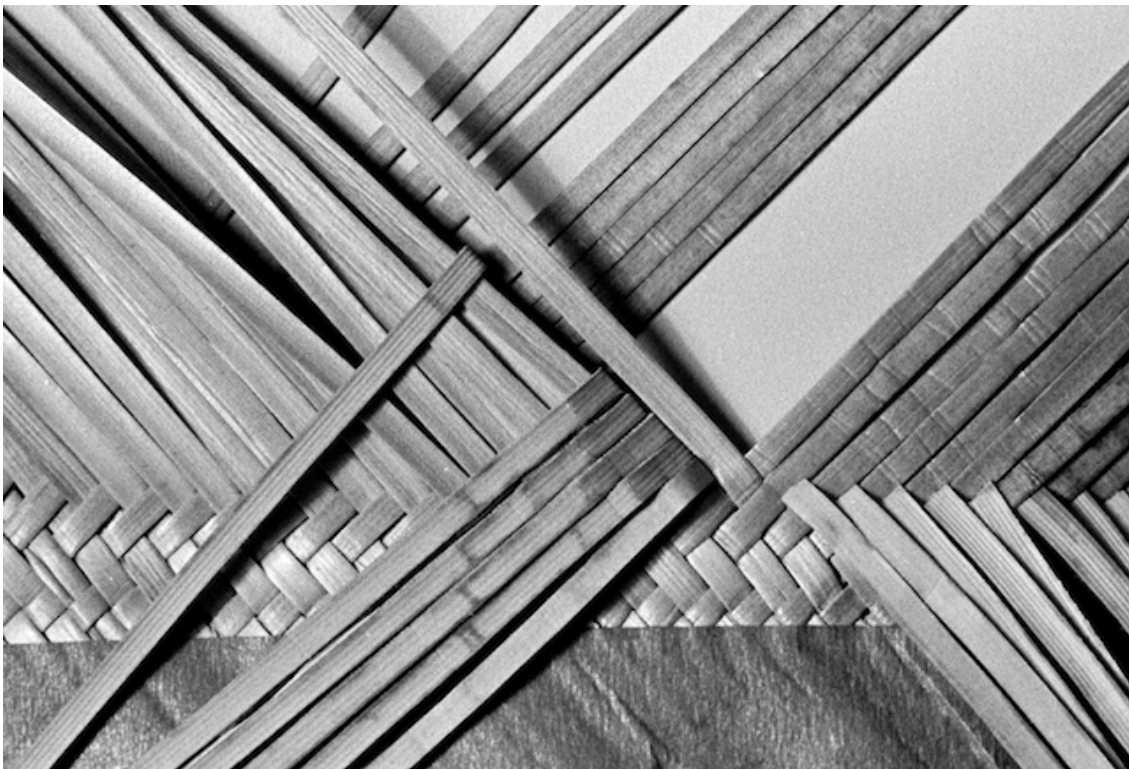


## Kaimana Pattern

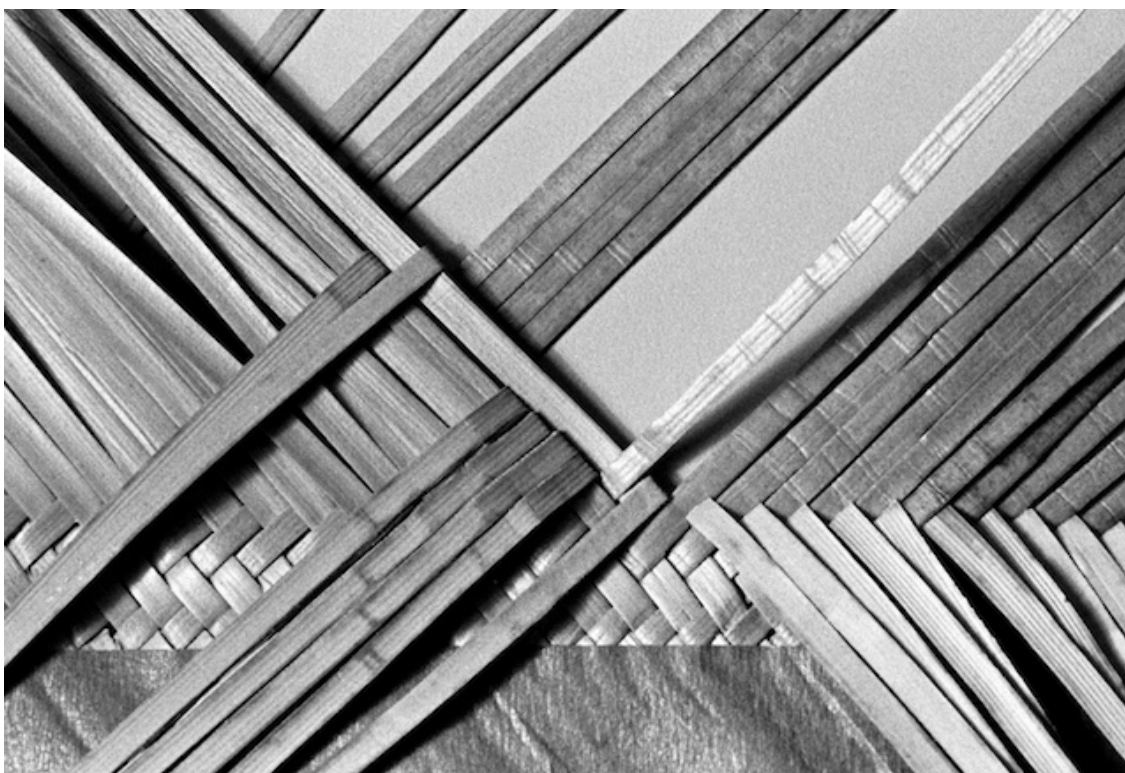
This weaving pattern is a little more complicated. It makes a nice contrast to the regular 'o'eno weave on the crown (ipu) of the pāpale. If possible, arrange your adds so the count of kū is divisible by one more than the number of kū in the pattern, especially on a two-tone hat. For example if you want the diamond to have four strands, the pattern uses up five kū. Use it on a row where you won't have to add, about 1/3 of the way down the side of the crown. This pattern is at its best on a two-tone hat.



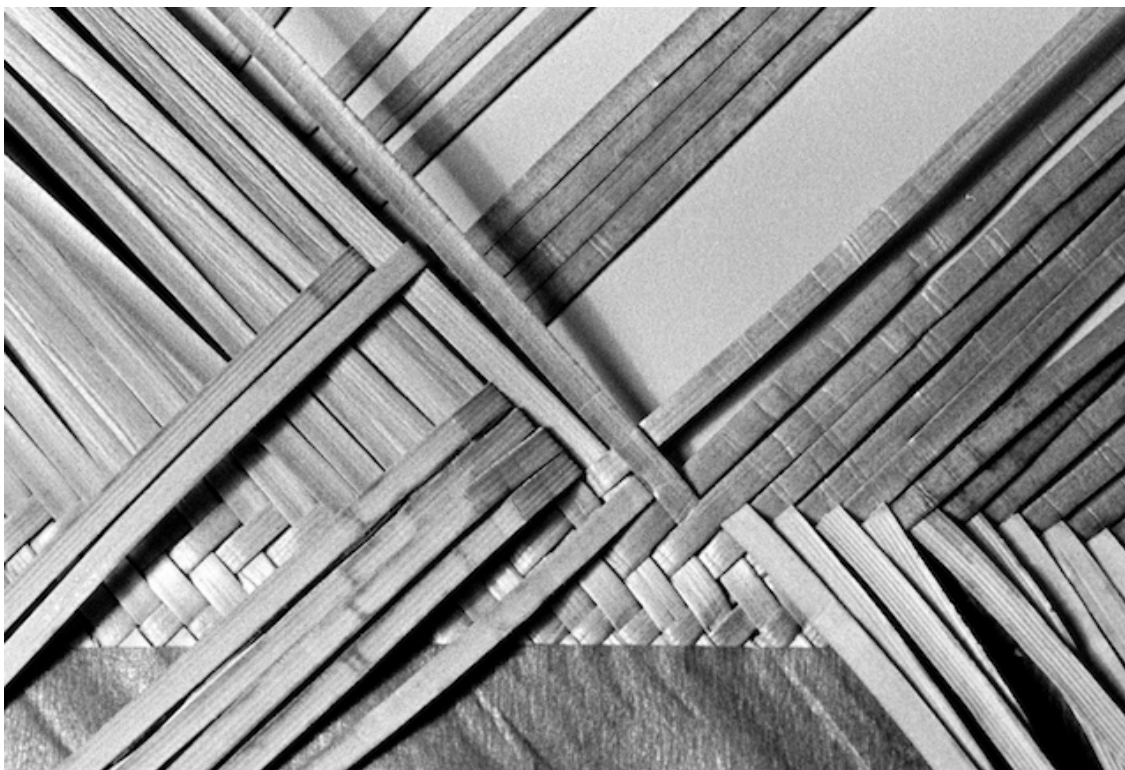
This is the starting setup for the kaimana pattern.



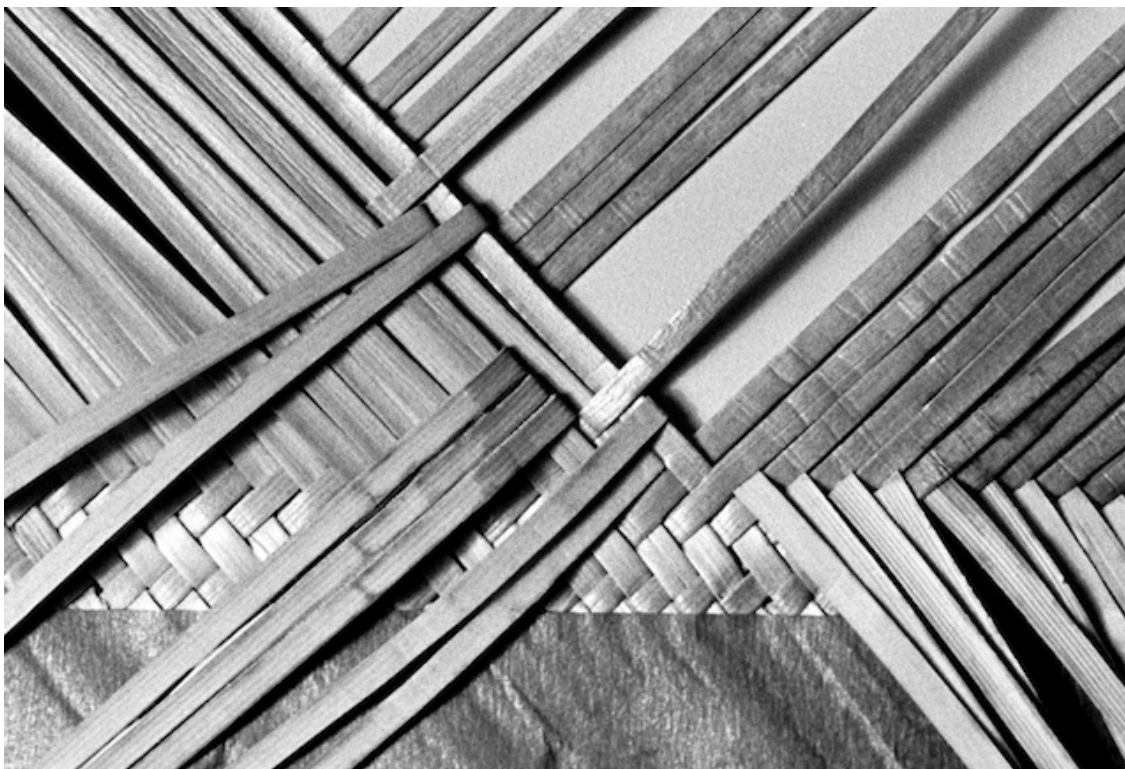
Moe.



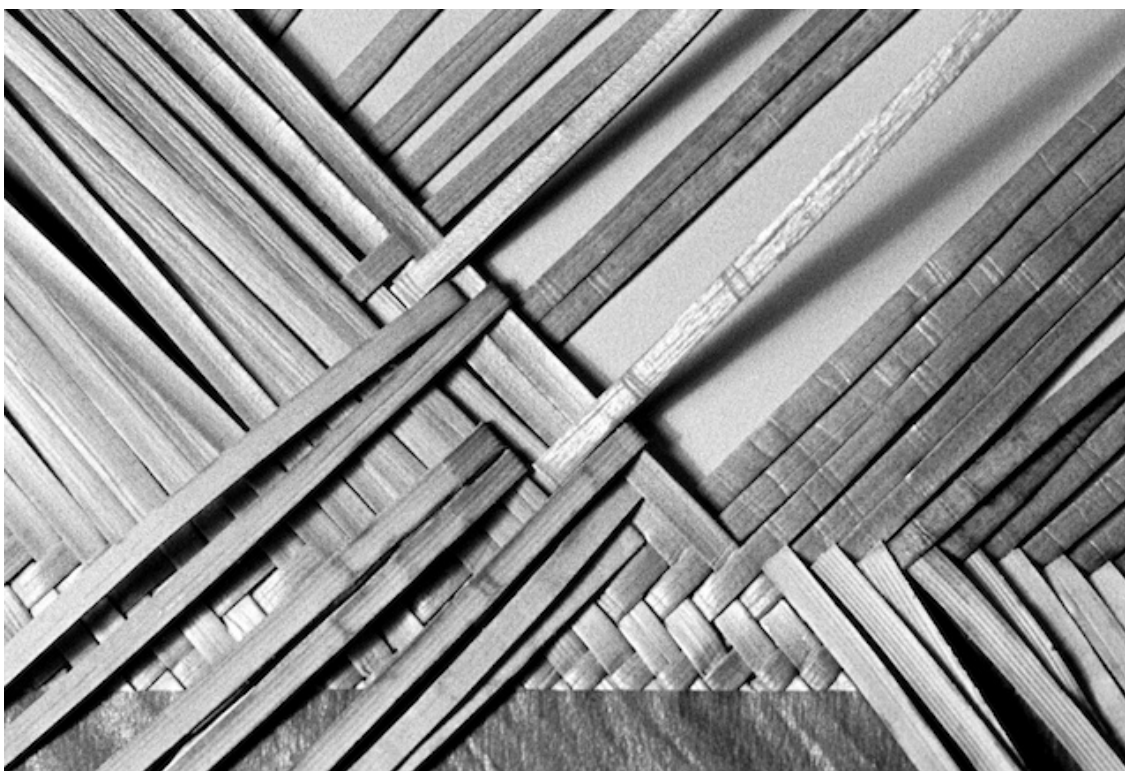
Do one maka of 'o'eno on the left and one maka of maka moena on the right.



Moe.

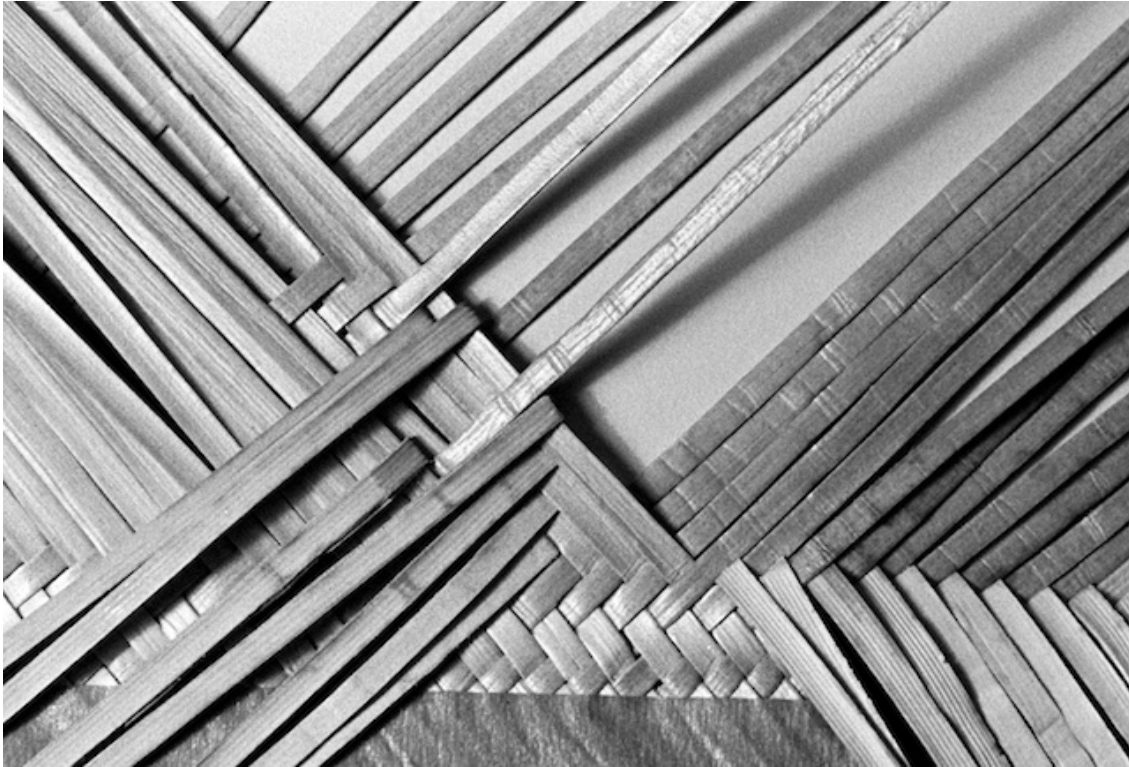


'O'eno on the left and maka moena on the right. Notice the kū on the far right stay down to the lower left.

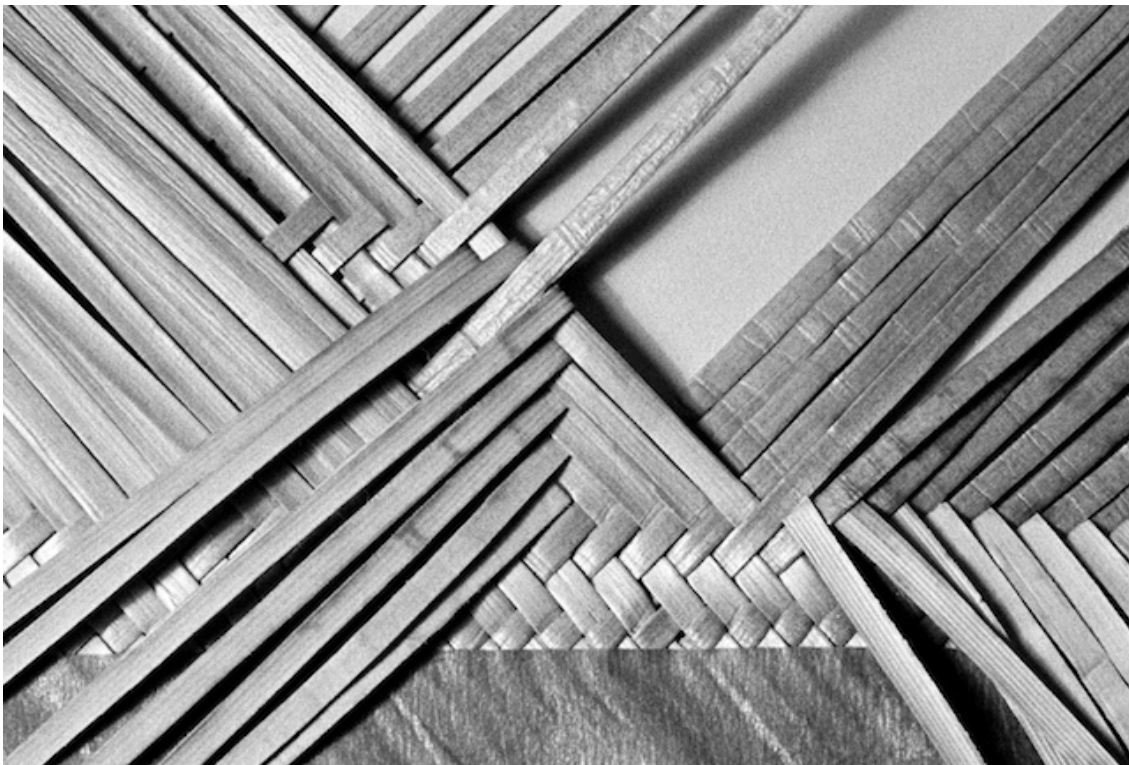


Continue in the same manner.

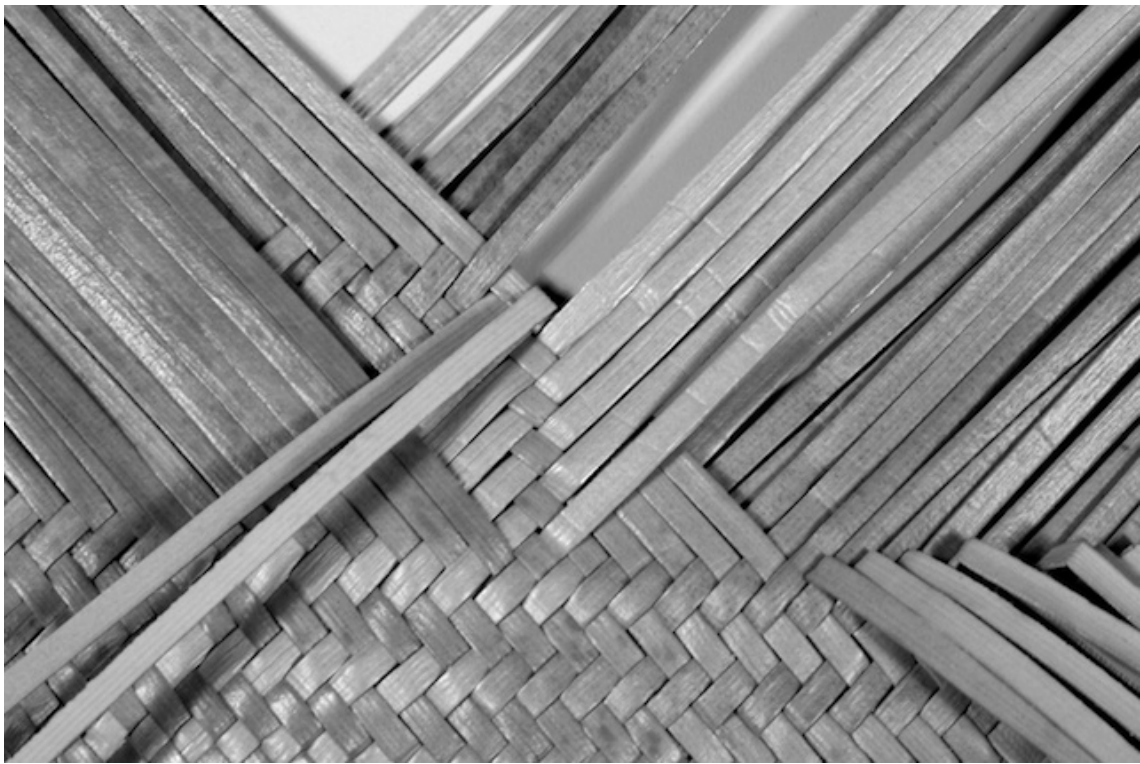




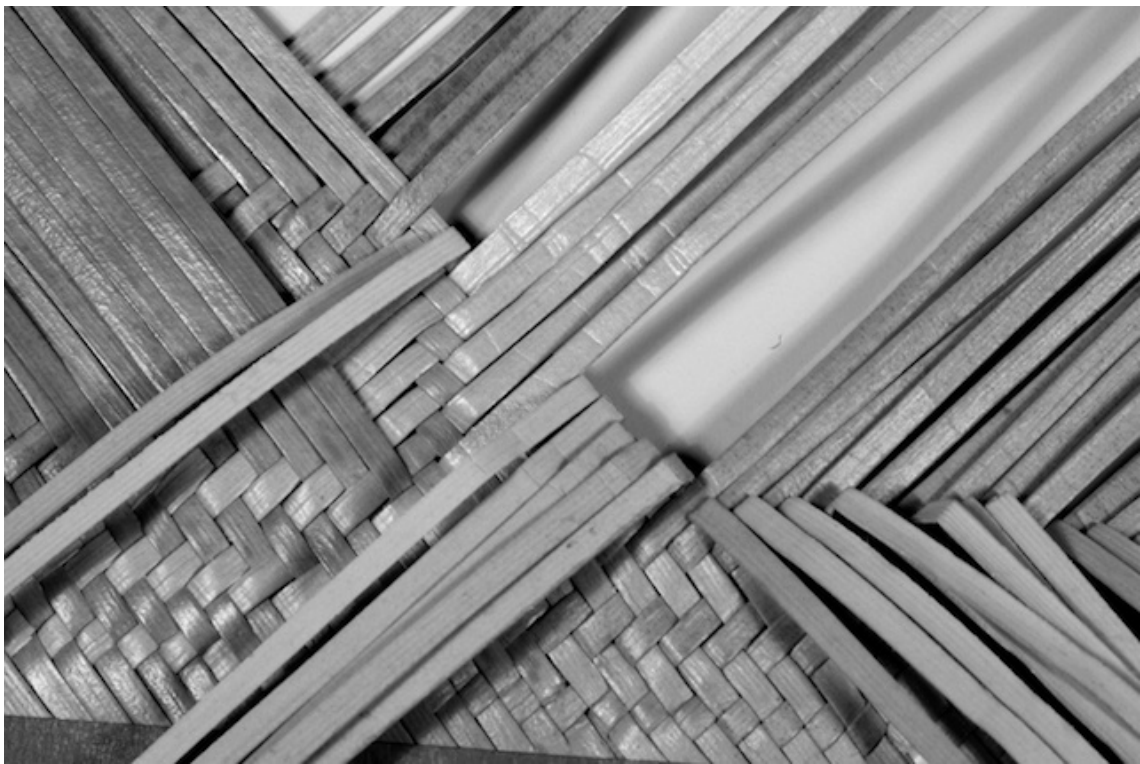
Continue weaving the pattern.



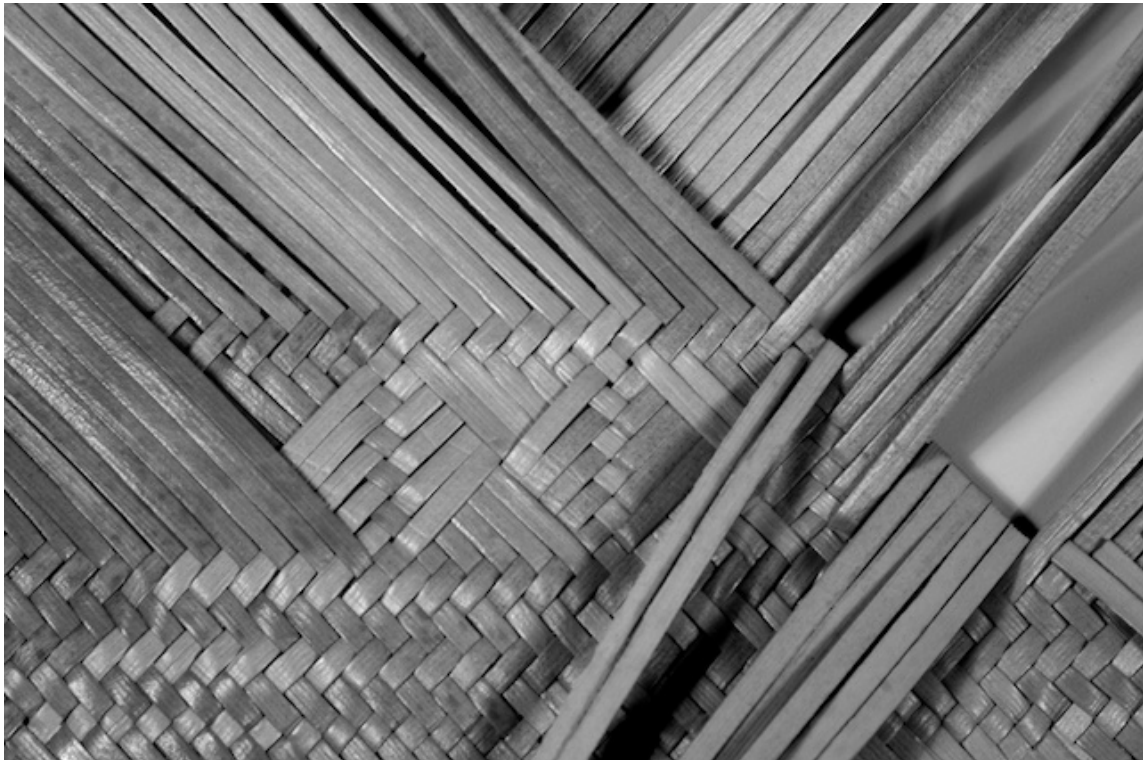
Continue weaving the pattern one more time.



Now bring up to the right all the kū that were down to the left.



Start the pattern over.



This view shows the pattern starting to appear.